



About the Guide

- This quick start guide is for reference only. Minor difference might be found in user interface.
- All the design and software here are subject to change without prior written notice.
- All trademarks and registered trademarks mentioned are the properties of their respective owners.
- Please visit our website or contact your local service engineer for more information.
- If there is any uncertainty or controversy, please refer to our final explanation.

Step 2

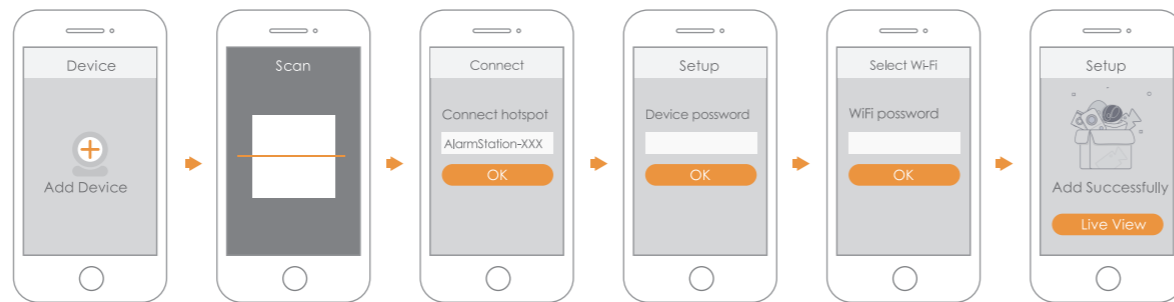
Run Imou App, and then register an account for the first use.

Step 3

Connect the Alarm Station to power source with the power adapter. Wait for booting up to be finished, and then the Alarm Station indicator flashes with blue light.

Step 4

Follow operations to finish adding the Alarm Station.

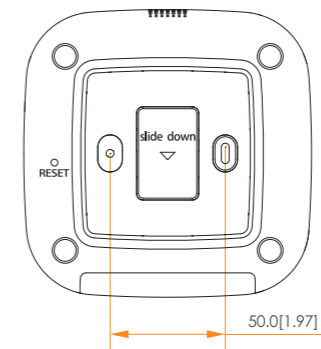


Pairing with Accessories

You can add multiple detectors, sirens and other wireless devices. Scan the QR code on the accessory with Imou App, and then follow the app guide to operate.

Installation

Installation dimension (unit: mm [inch])



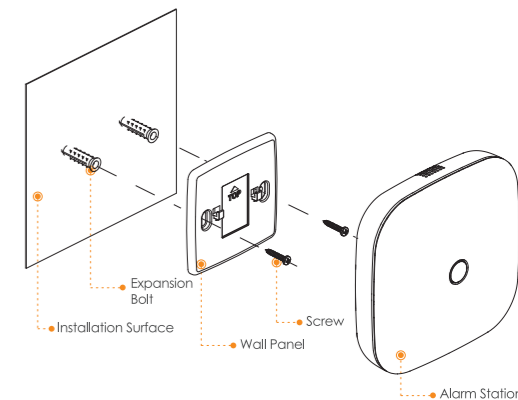
You can install this device with expansion screw.

Step1 Drill holes in the wall according to hole positions of the bracket.

Step2 Put expansion tubes into the holes.

Step3 Fix the bracket with self-tapping screws.

Step4 Put the Alarm Station into the bracket from top to bottom.





Quick Start Guide Alarm Station

Version 1.0.0



1.2.51.32.15161-000

Packing List



Device*1



QSG*1



Power Adapter*1

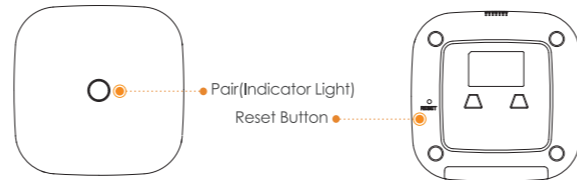


USB*1

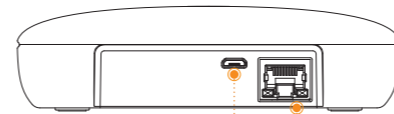


Screw Package*1

Introduction



Pair (Indicator Light)
Reset Button



Power Port
Ethernet Port

Name	Description	
Pair	Press and hold for more than 5 seconds to enter AP network pairing mode.	
Indicator	Red light on	Booting up
	Blue light on	Normal operation
	Blue light slowly flashing	Enter Wi-Fi network pairing mode
	Blue light fast flashing	Enter detector pairing mode
	Red light slowly flashing	Network error
	Red light fast flashing	Alarm
Reset	Red and blue light flashing alternatively	Upgrade
	Reset the device to initialized status. When the power is on, press RESET key for 6s. When you hear a beep, release the RESET key, the Alarm Station will restart and restore factory default settings.	

Operating With Imou App

Adding Alarm Station

Step 1

Scan the following QR code or search "Imou" in Google Play or App Store to download and install Imou App.

Note:

If you have installed the App, update it to the latest version.

